



Rhino

STRUCTURES

CONTRACTOR & MACHINERY STORAGE

V1.0 2023



CONTRACTOR & MACHINERY STORAGE

When it's width and height you're after, a Rhino Structures building kit is your perfect solution; it will really give you the space to store all your big equipment and tools.

We'll design your shed to be built to your specific requirements, high and wide enough to fit any tractor, digger, dozer or other machinery.

Or you can create a multi-purpose space with secure enclosed bays in addition to open-fronted areas which allow you to reach tools and implements or stored fodder easily.

Rhino structure's 16 metre clearspans allow bays with widths of up to a roomy 12 metres, letting you store larger machinery and maximise space. If you need even more room, it's just a matter of talking with us – our crossbeam manufacturing process allows for creating some seriously spacious structures of up to 32m-plus.

EVEN MORE STORAGE?

You read that right!

A typical shed design allows for just one machine per bay. With a Rhino Structure you can create bays the size you need, which means you get better use of the available space, and better protection for the valuable equipment inside it.





CHOOSE HOW YOU BUILD

You get to choose what your structure is built out of:

- A combination wood and steel frame;
- Light-duty steel frame;
- Heavy-duty steel frame.

LESS MESS WITH RHINO BIRD-PROOF PURLINS

Bird-proof purlins keep your structure and everything inside it clean. There's less fire risk too because there's no discarded nesting material lying around.

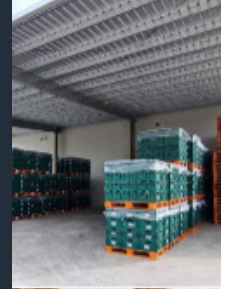
The purlin's strong design gives your construction maximum strength & stability and can be used with timber beam or clearspan steel rafter designs to keep your contents clean and tidy.



YEARS OF EXPERIENCE BEHIND EVERY RHINO STRUCTURE

Over the last 20-plus years, our team has sold literally thousands of kitset structures. All that experience is yours to use – we'll look after the process from council consent right through to delivery of the kitset and can also advise on installation options and builders as required.

And, if you're project managing on behalf of a client, Rhino is your best option – we'll do all the behind the scenes work on your behalf, keep you posted on progress the whole way through the project, offer advice and solutions, design, and price to your specs, run timelines and all that other time-consuming really critical stuff.



FAQ'S

AS A PROJECT MANAGER, HOW CAN RHINO STRUCTURES HELP ME?

Great question! Think of the Rhino team as your behind-the-scenes team: timelines, GANT charts, KPIs, tick, tick, tick. We keep you up to speed every step of the way, making life much easier for you throughout the entire process.

HOW WIDE CAN THE BAYS IN MY STRUCTURE BE?

We can clearspan up to 30-plus metres wide and bay sizes start at a standard 4.8m, extending up to 10.0m wide or further. Bay widths naturally vary depending on the construction but can be adjusted for maximum efficiency or planned to meet specific needs.

WHAT MATERIALS IS THE STRUCTURE BUILT FROM?

Rhino Structures use a combination of durable structural steel and versatile timber, which not only makes things stronger but makes installation much easier and quicker. You get to choose between a light-duty steel frame or a heavy-duty steel frame. Whatever your spec, Rhino Structures will deliver every time.

CAN THE STRUCTURE HAVE A CONCRETE FLOOR?

Of course! Chat to our helpful team during the design phase to discuss the thickness of concrete floor that will work best for your structure.

HOW DOES THE BIRDPROOF PURLIN WORK?

There's nothing worse than keeping your equipment under a bird's bedroom. If you choose a wood/steel or heavy-duty steel frame, we can deliver you something pretty much bird-proof: each Rhino rafter is a fully enclosed structural steel member, and the purlins bolt between the rafters so there is nowhere for birds to perch in the roof space.

OUR PROCESS



Sales Team

Work alongside our sales team to get an approved design and quote.



Plans Drawn

We get our design team to draw up plans.



Engineer

The plans are approved by an engineer who issues a PS1.



Consent

Building consent lodged with council.



Order

Building consent approved.



Delivery

Kit delivered to site.



“It has been a trying process to get this far, and I appreciate your patience and not giving up on this project despite some of the obstacles. Your response times to date have been excellent. Right onto it. Thank you!”

Dr Mark Smith

Trust Tairāwhiti, Gisborne- Tairāwhiti

Rhino
STRUCTURES

0800 244 743

rhinostructures.co.nz

sales@rhinostructures.co.nz